



GLADSAXE

Welcome to Gladsaxe Municipality in the Greater Copenhagen area

– a large dynamic industrial municipality in Denmark with
a strong focus on sustainability and partnerships

2024



Denmark in numbers

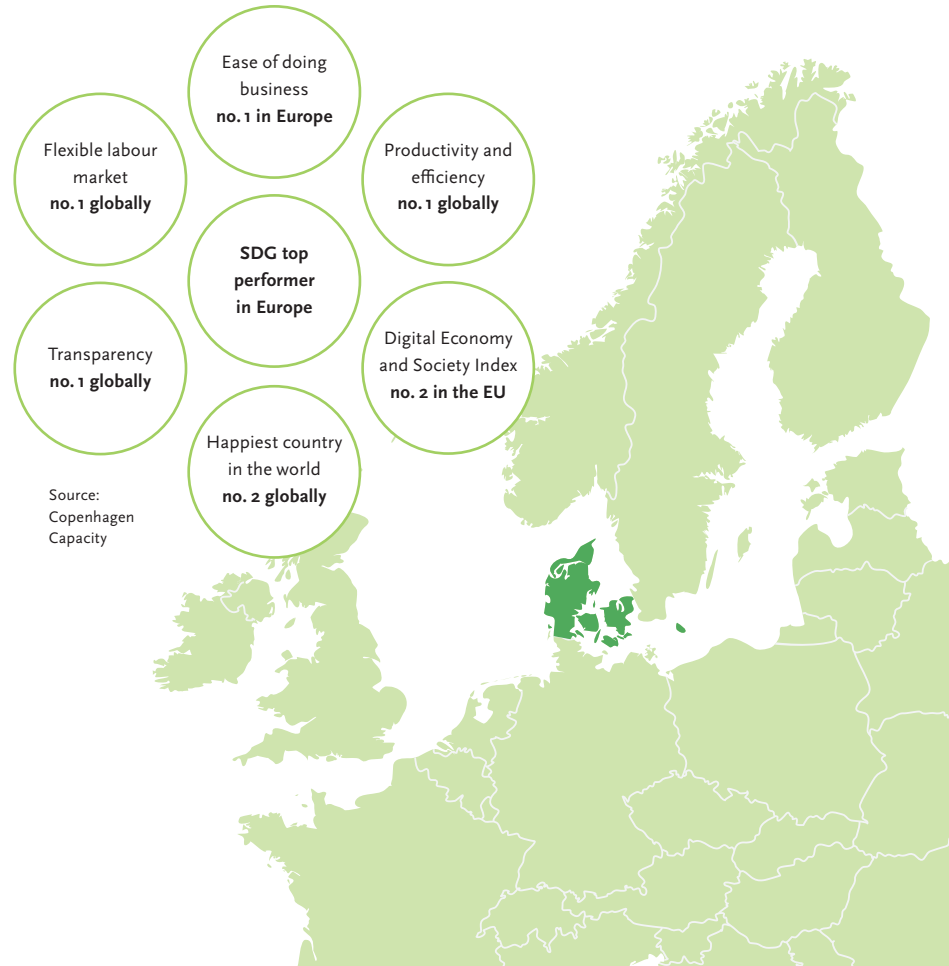
Denmark is located in Northern Europe and has a population of approximately six million people. Denmark is a constitutional monarchy with a parliamentary democracy.

The country is a member of the European Union (EU) and the United Nations (UN).

Fun facts

- More than **50 %** of Copenhageners cycle to and from work every day
- In Denmark, you are never more than **52 km from the ocean**
- The Copenhagen **harbour is clean enough** to swim in
- We have a word for that cosy **feeling** of togetherness: **'hygge'**.

Source: Visit Denmark



Gladsaxe in numbers

Life science municipality
in the Nordics

No. 1

Industrial municipality
in Denmark

No. 2

GDP per capita
in Denmark

No. 2

+43,000 employees in the private sector

+3,260 companies

+500 start-ups and new companies annually

Global ranking A in the CDP.net climate ranking



Gladsaxe Municipality is member of
Medicon Valley Alliance

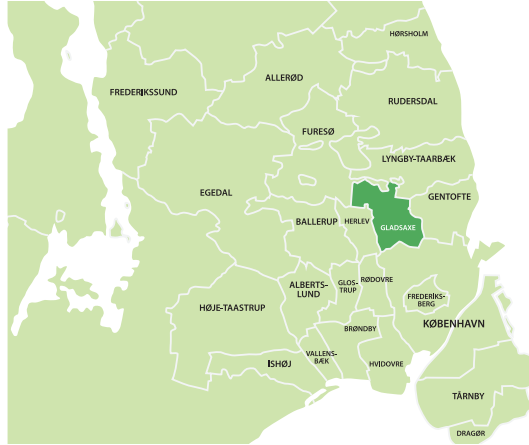
Gladsaxe – an attractive and sustainable business municipality

Gladsaxe Municipality is located in the northern suburbs of Copenhagen, just 10 km from the city centre and 30 km from Copenhagen Airport.

The municipality is a diverse urban district with a mix of housing types, green areas and business and has a population of 70,000 residents.

Gladsaxe is the first municipality in the Nordics working with social-, climate- and economic sustainability by integrating the United Nations sustainability goals in the overall strategy for the municipality.

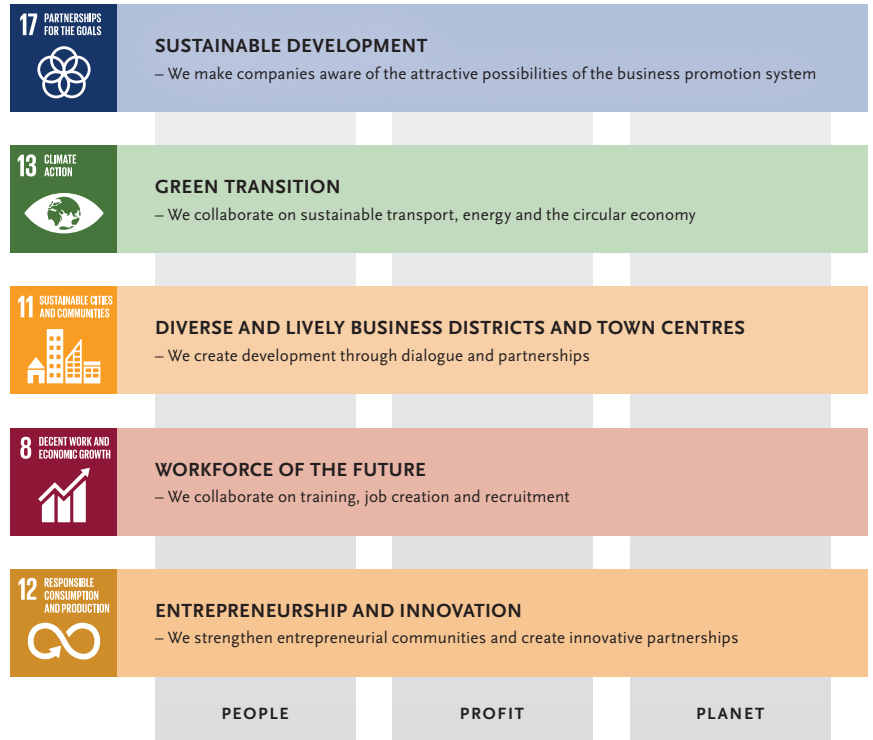




Gladsaxe – five strategic priorities

It is essential for us that companies located in Gladsaxe experience that they are part of a dynamic and sustainable municipality with innovative partnerships, excellent service, and support for both Danish and international companies.

We focus on five strategic priorities and the three bottom lines; in collaboration with companies.



Partnerships and living labs



Gladsaxe Municipality has significant experience in initiating and facilitating various types of partnerships and networks, as well as acting as a living lab for established companies, start-ups and educational institutions who want to try out new types of technologies and solutions.

As part of our support service for companies, we have established a business community, Gladsaxe Erhvervsby, in which we facilitate networks and collaborations, focusing on the 'hot' topics and themes within sustainability, commercial buildings, human resources and CEO's.

Innovation and entrepreneurship



We need start-ups and entrepreneurial companies to develop sustainable solutions, cultivate new markets

and inspire and collaborate with established companies. We therefore encourage, support and facilitate innovative networks and communities such as Alfa Laval's Innovation House

www.alfalaval.dk/info/denmark/innovation-house

Sustainability and the green transition



Gladsaxe Municipality has a goal of reducing its CO₂ emissions by 70 % before 2030, compared to 2007.

The emissions derive primarily from transportation and energy consumption from both the residential and commercial sectors – transportation constituting 43 %. The number of cars alone has risen by 70 % in Gladsaxe over the past ten years.

These challenges demand new types of innovative partnerships and collaborations across the boundaries of the municipality, industries, sectors and organisations in order to develop the necessary and innovative solutions, as well as change behaviour.

Life Science Hub: AGC Biologics expansion in Gladsaxe

AGC Biologics is a leading global biopharmaceutical Contract Development and Manufacturing Organization providing development and manufacturing services for protein-based biologics, cell and gene capabilities, and advanced therapies.

AGC Biologics is one of the fastest growing life science companies in Denmark. In 2021 the company announced its groundbreaking of its new facility at its Copenhagen site in Gladsaxe. This new expansion allows AGC Biologics to generate around 300 new jobs in Gladsaxe.



“When we were evaluating various opportunities where to expand our production facilities; Gladsaxe Municipality was a clear choice. Gladsaxe is part of Greater Copenhagen and located in the Medicon Valley, the greatest life science cluster in the European Union with access to several excellent universities. The municipality is very well located in terms of the highway, public transportation system and the airport. The green transition and sustainability are key focuses and priorities for the municipality, which is very important to us.”

The dialogues and processes with Gladsaxe Municipality related to the expansion have been very positive and smooth. Generally, we experience an excellent business service including facilitation of various value-generating networks – all this was important, when we chose Gladsaxe.”

General Manager Andrea Porchia



Gladsaxe – a liveable and diverse municipality for international citizens



We appreciate the diversity and value that international citizens bring to and generate for the municipality. It is important to us that our citizens enjoy living in and feeling part of Gladsaxe Municipality. We therefore engage in organizing networking activities in collaboration with local companies and organizations.

Join the international network for internationals living and working in Gladsaxe

Monthly meetup in Gladsaxe takes place every first Tuesday of the month at Gladsaxe Library.



Facebook group:
Internationals in Gladsaxe

Gladsaxe in words and images

- Highest growth rate in international employees in Denmark
- Strategic focus on sustainability and the green transition
- 10 km from Copenhagen's city centre and 30 km from Copenhagen Airport
- Excellent public transport to and from Gladsaxe
- Various green areas and lanes for walking, cycling, running and picnics
- Many schools and day-care institutions
- Numerous sports clubs and other leisure activities: art, concerts, culture and libraries
- Voluntary clubs where you can meet and connect with local people.



Support and service to companies

Gladsaxe Municipality has established a business team of people with significant experience from various industries and sectors to support and assist companies. The key focus and purpose of the business team is to provide support and guidance to both Danish and international companies, ensuring that interactions and processes between the municipality and companies are smooth and valuegenerating. We look forward to welcoming you to Gladsaxe Municipality. Please do not hesitate to reach out to us. We are here to help and support you!



Karen Brosbøl Wulf
Business Manager and Leader
of Gladsaxe Business City
Mobile: +45 29 29 88 58
E-mail: karwul@gladsaxe.dk



Kirsten Voxtrup
Business Consultant
Mobile: +45 24 99 68 98
E-mail: kivope@gladsaxe.dk



Lone Jacobsen
Business Consultant
Mobile: +45 51 25 33 07
E-mail: lonjac@gladsaxe.dk

Gladsaxe Municipality
The Business Support Team
Rådhus Allé 7
2860 Søborg

gladsaxe.dk/erhverv
Phone: +45 39 57 50 15
E-mail: erhverv@gladsaxe.dk